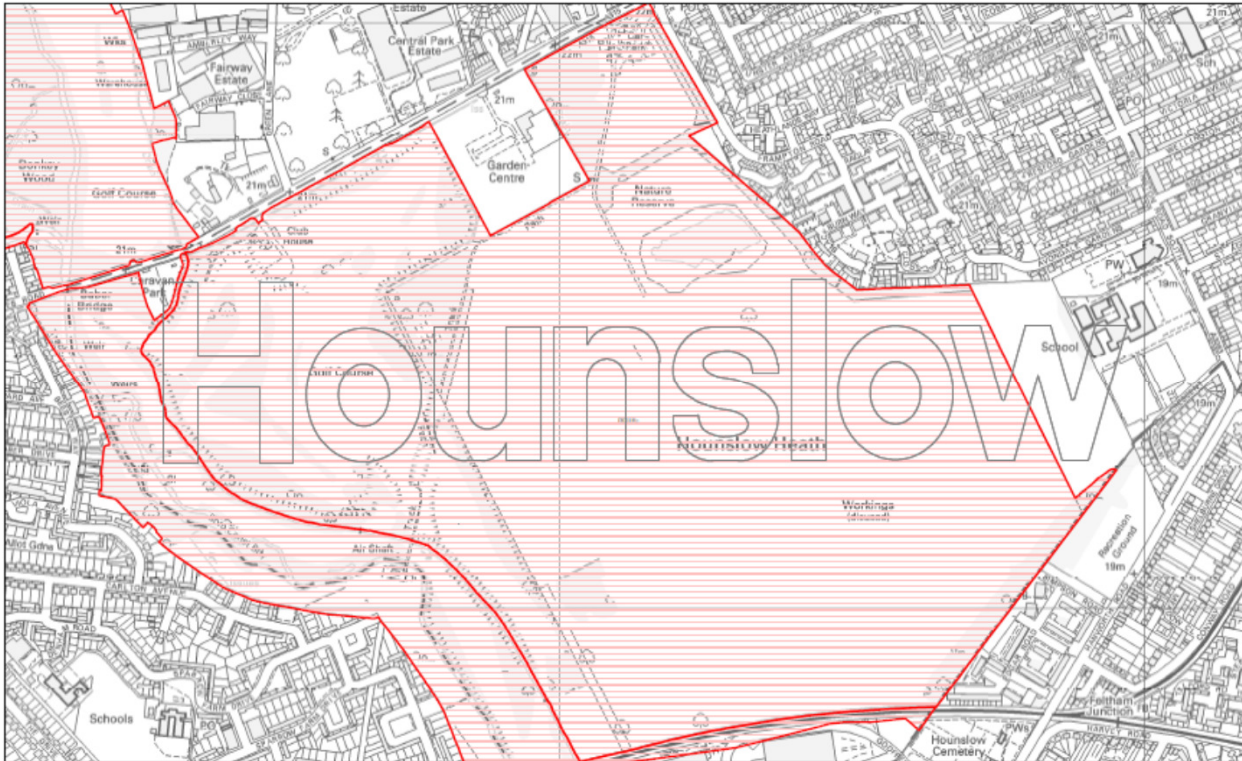


Hounslow Heath Management 2000 to 2016



Site Description

- 124 hectares including golf course and the River Crane LNR 81 hectares
- Clay cap on eastern side of site overlying land fill, mixture of reconstituted gravels on western half of site.
- Eastern side of site comprising heathland and acid grassland habitat mixed with oak, birch and hawthorn, bramble scrub and neutral grassland.
- Western side of site neutral grassland and hawthorn and bramble scrub areas of willow and hedgerows



- Green lung for 40,000 surrounding residents
- Primarily used by dog walkers also has green way route through centre of site daily traffic of commuters
- Under 1 mile from Heathrow
- Estimated foot fall around 200,000 visits per year
- Utilised by army for training runs etc
- Operating ranger team and Friends of group

Communities/species of importance

- Scrub and woodland bird populations



- Invertebrate Populations



- Adders and other reptiles



Plants



Management over last 15 years



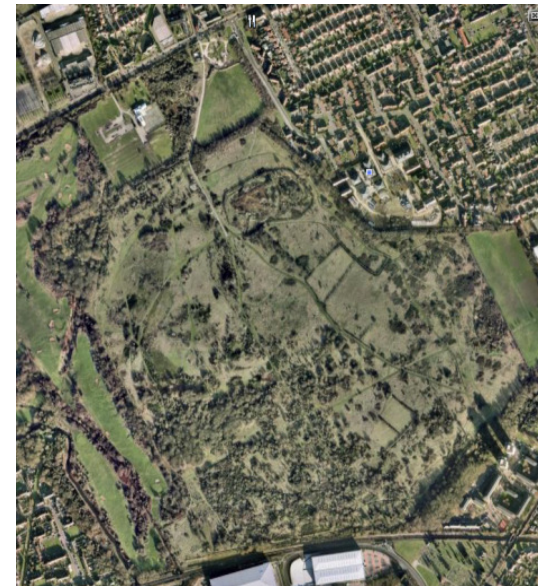
Heathland Restoration/Creation



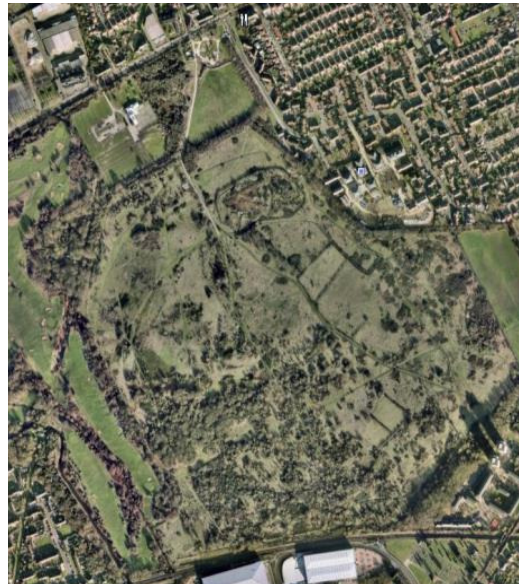


- Hay cutting

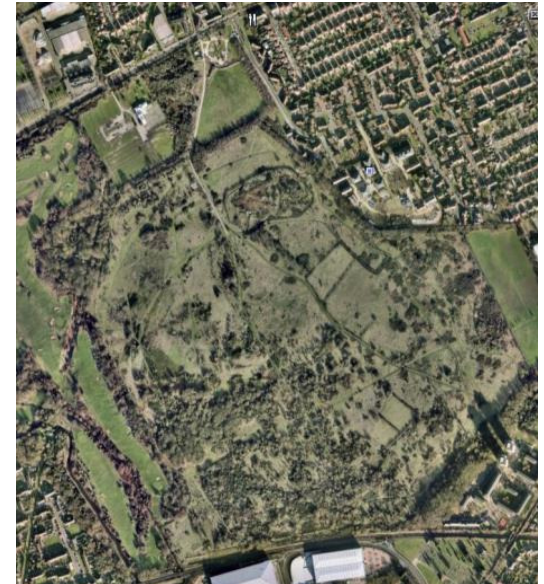
Tree coppicing and removal



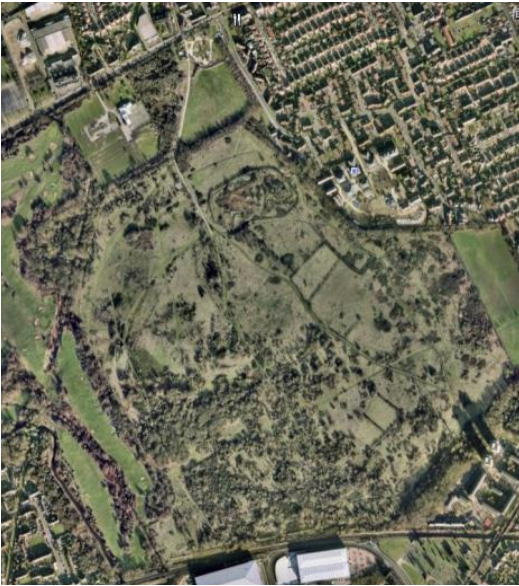
Volunteers



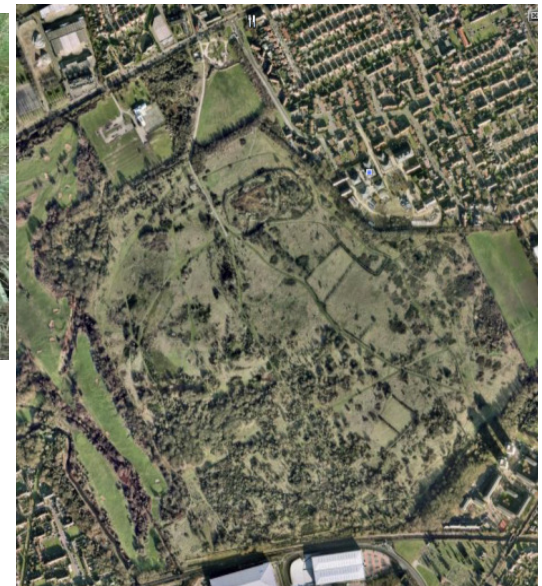
Flailing



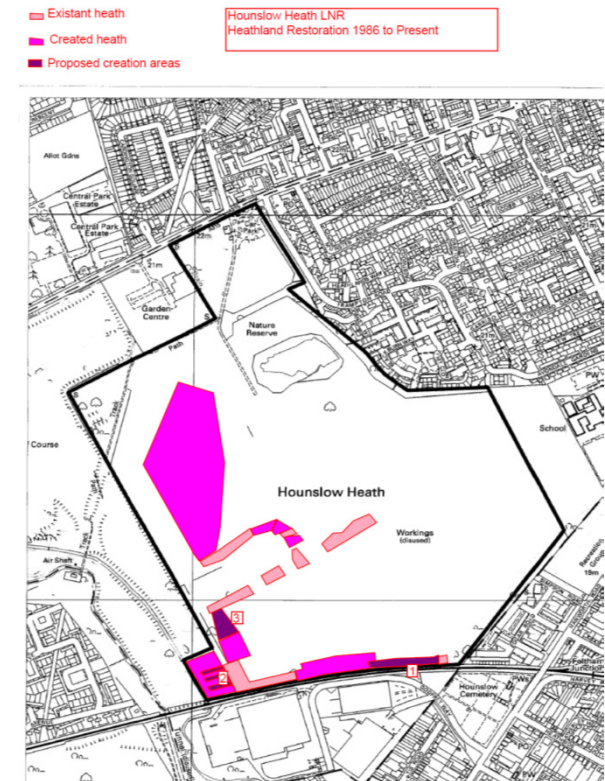
Hedges



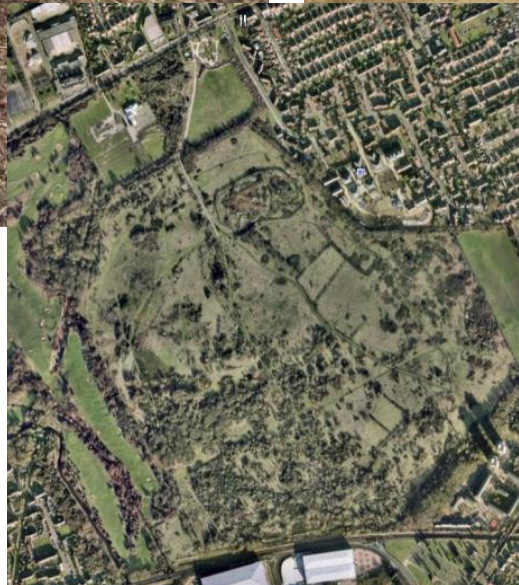
Hibernacula creation



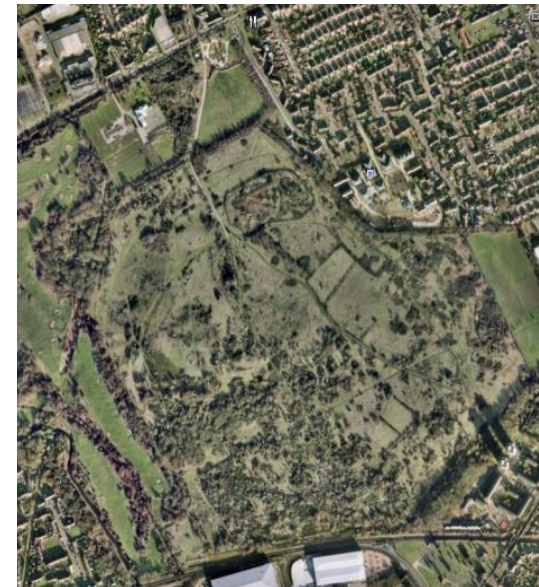
Habitats and effects (heath)



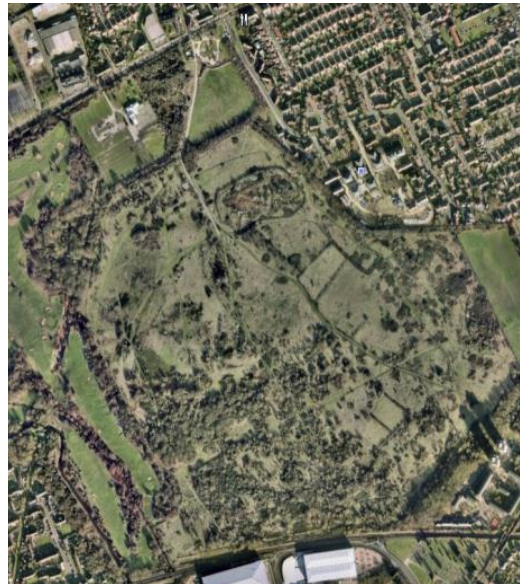
New clearance



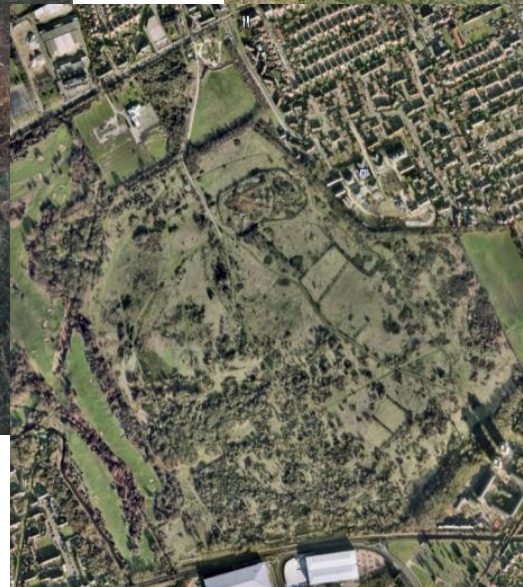
Neutral scrub and grassland



grassland

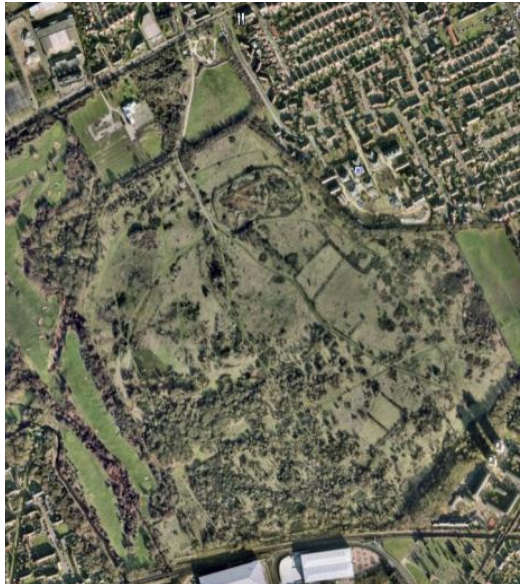


Woodland edge





bramble



Issues effecting adders on site

- Dog interference
- Fires
- Lack of management, succession
- Lack of understanding by local populace
- Hibernacula locations and substrate
- Site size and connectivity
- Island effects
- Litter, vandalism

Fly tipping and litter





Introduced 42 snakes
present estimated
numbers well over 200