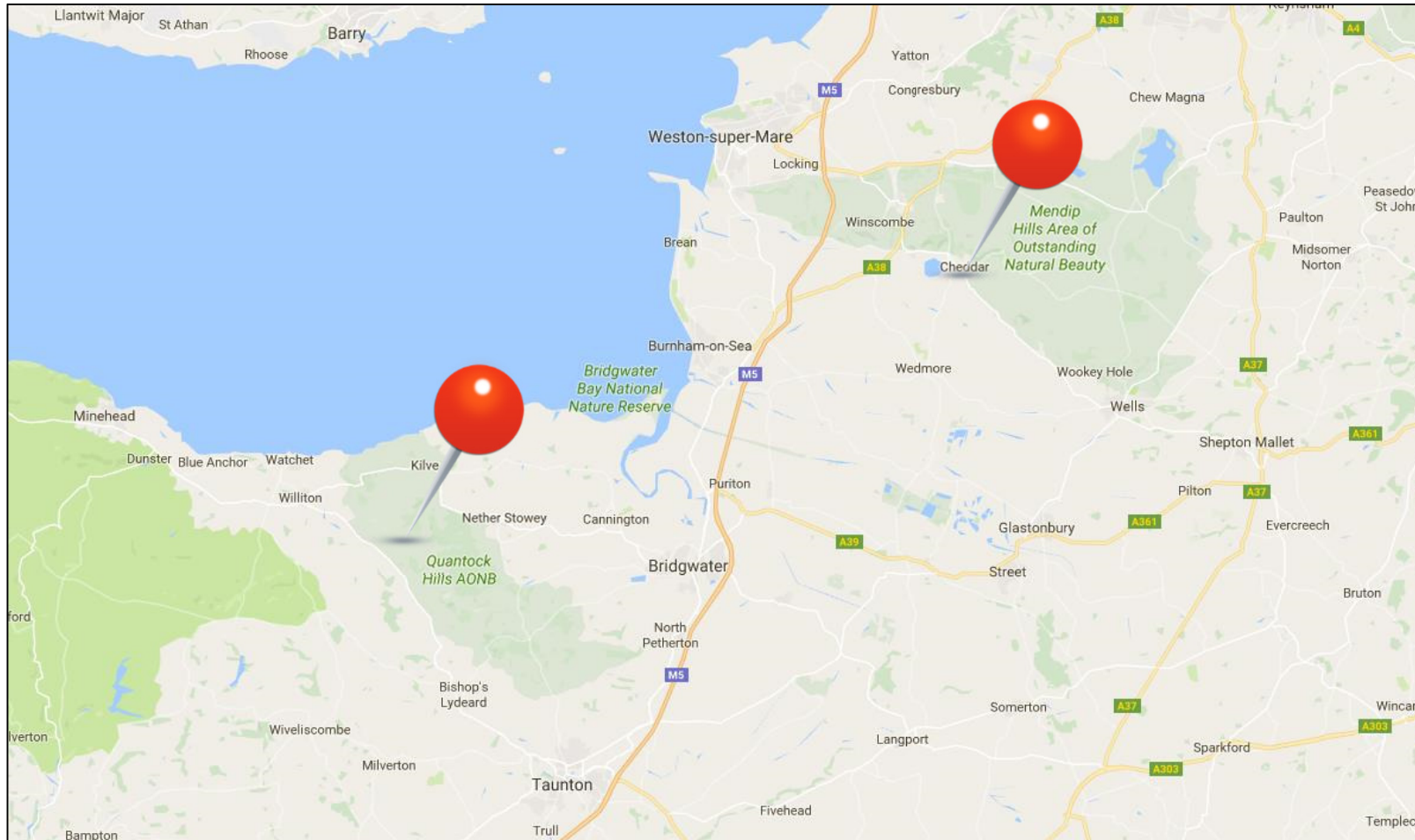


# COMPETING PRIORITIES MANAGING QUANTOCK COMMON FOR ALL

Iain Porter  
Development Officer



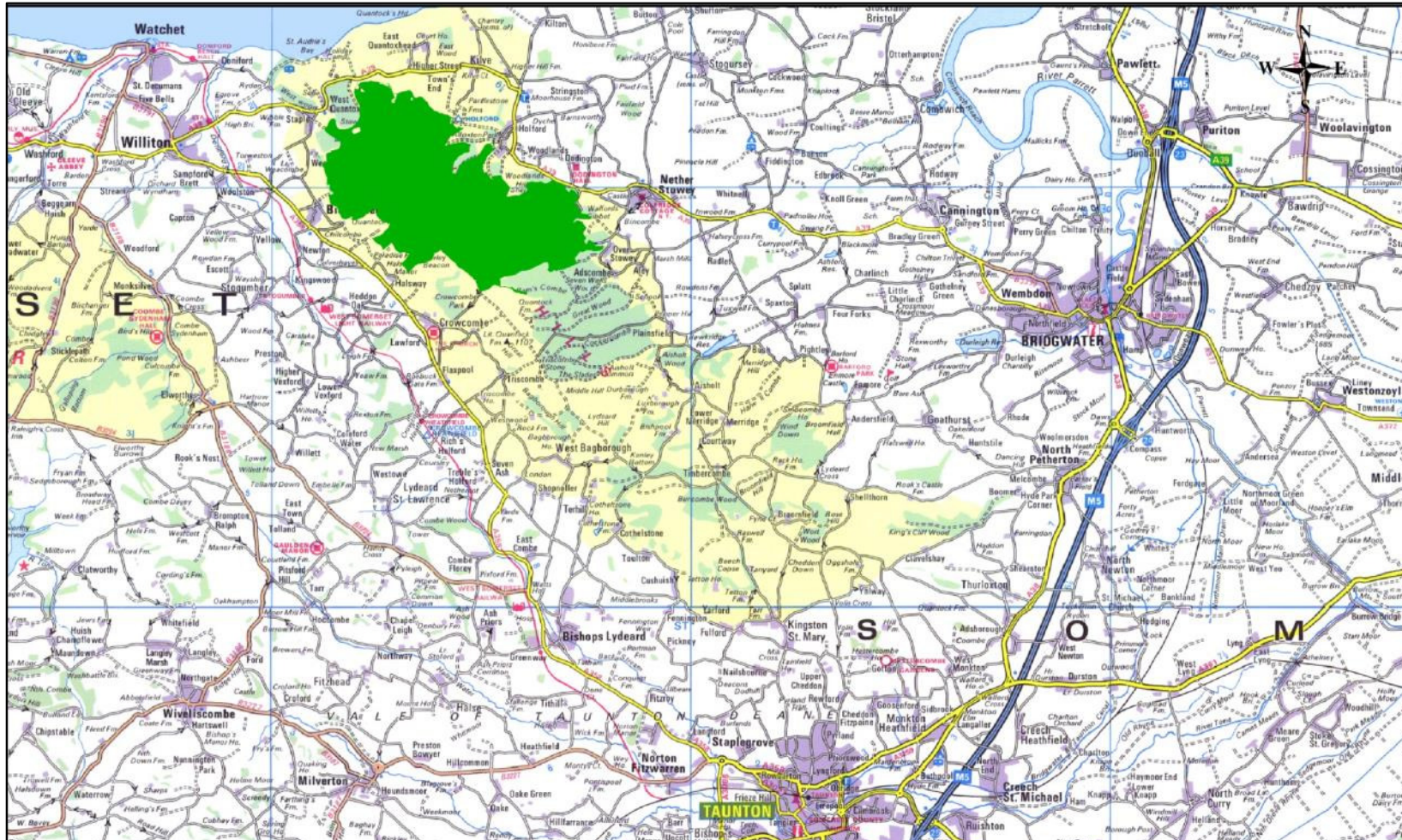
# Quantock Common







# Quantock Common







# Quantock Common

- 2,500Ha semi-natural habitat

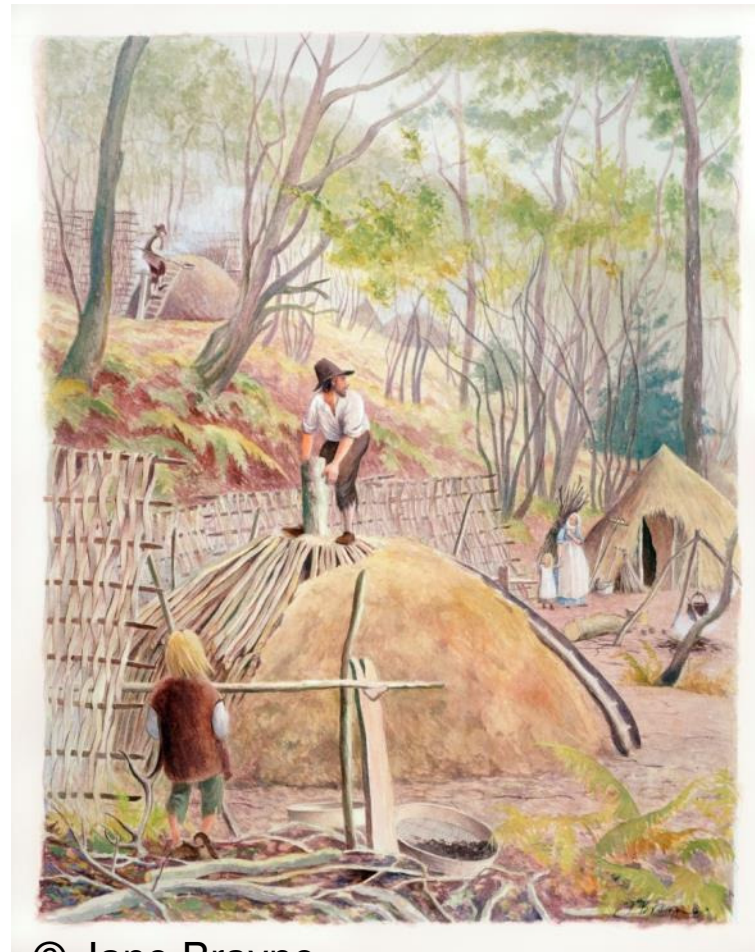




# Historic Use



© Jane Brayne



© Jane Brayne





# Today's users





# Aim for the Common

- Priority set by NE
  - Ensure extent of shrub heath present in 1996 is retained
- How:







# Competing Priorities

- Birds



RSPB images. Colin Carver





# Competing Priorities

- Agriculture





# Competing Priorities

- Recreation





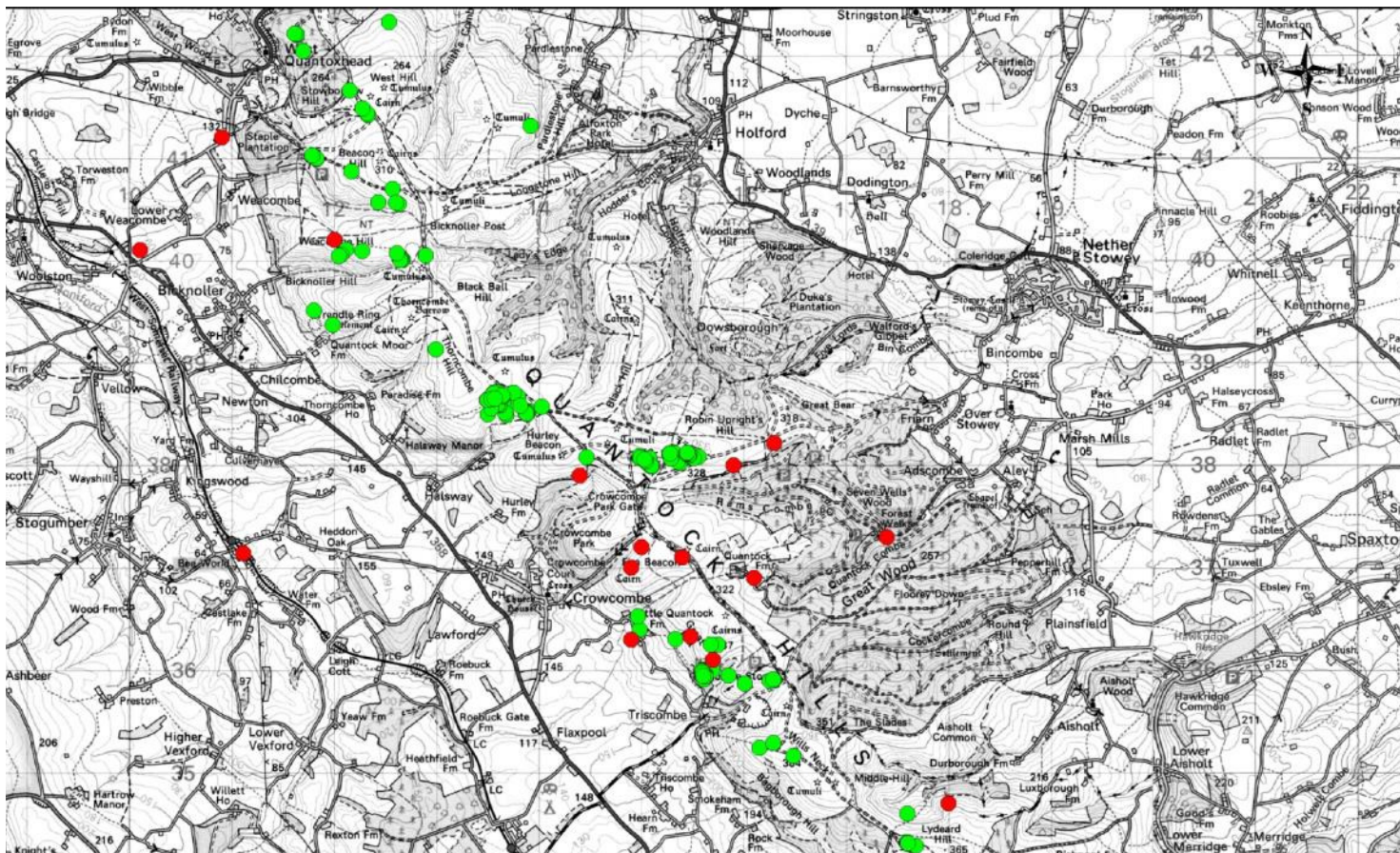


# How do adders fit in?

- Pre 2008 Quantock Hills not seen as important for adders
- Lack of research vs not important
- Desire by AONB Service to know more
- Approach by local student catalyst for research
- 2011 – RAGS Project



# Adders on the common







# Adders on the common

- Since RAGS project
  - Identification of ‘hotspots’
  - Identification of potential hibernaculum
  - Fed recommendation into latest MIP



# Changing Management

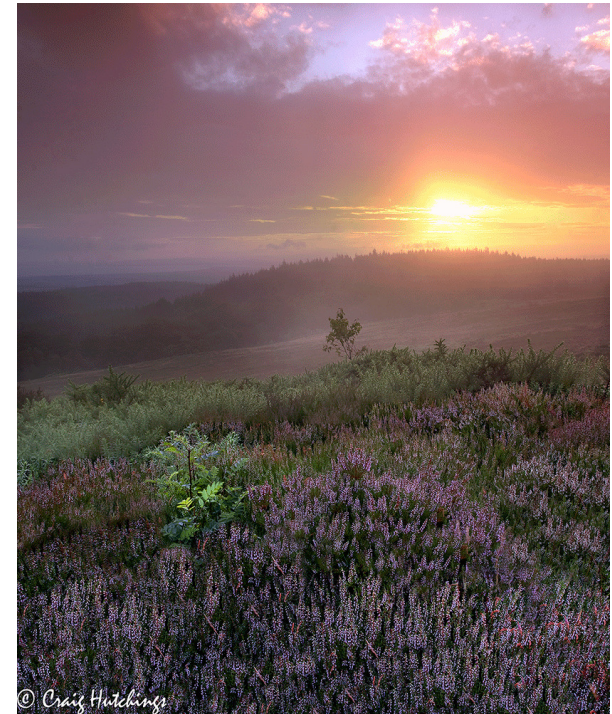
- Adapting management techniques
  - ‘dirty’ swales
  - Cut & collect
  - Increasing use of licenses / permissions for users
  - Changing grazing
- Off common habitat creation





# Future Management?

- Flexible site specific approach
- Link common to off-common habitat.
- Increase monitoring



© Craig Hutchings



Iain Porter

Development Officer

(t) 01823 451884

(m) 07977 402399

(e) [iporter@somerset.gov.uk](mailto:iporter@somerset.gov.uk)

© Kevin Palmer



Landscapes  
for life  
.org.uk

