

***Adder Translocation
Case-study, Hounslow Heath***



Gareth Matthes Oct 2016

Introduction

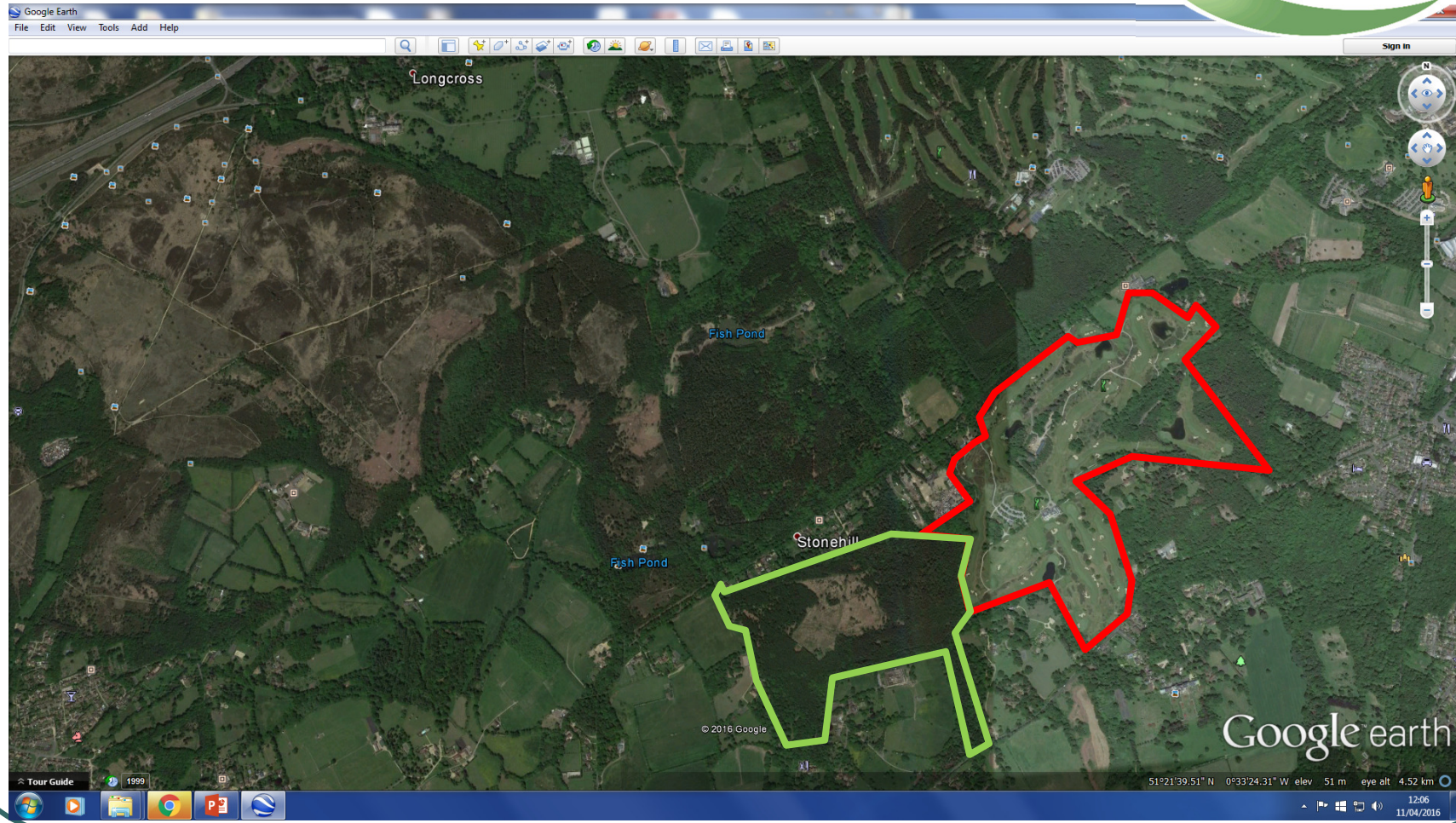


- Adder Translocation Case-study, Queenwood Farm, Surrey to Hounslow Heath, Greater London 2000
 - Receptor Site Choices
 - The Release
 - Measuring success
 - Achieving success



Stanner's Hill Adder Basking

Donor Site Queenwood Farm



Choosing Receptor Sites



1. Suitable habitat, size and 'safe' from development
2. Appropriate permissions and sympathetic land-owner
3. Close proximity to the site, ideally within same river catchment
4. Available habitat to support incoming population



Stanner's Hill (50ha), adjoins Queenwood

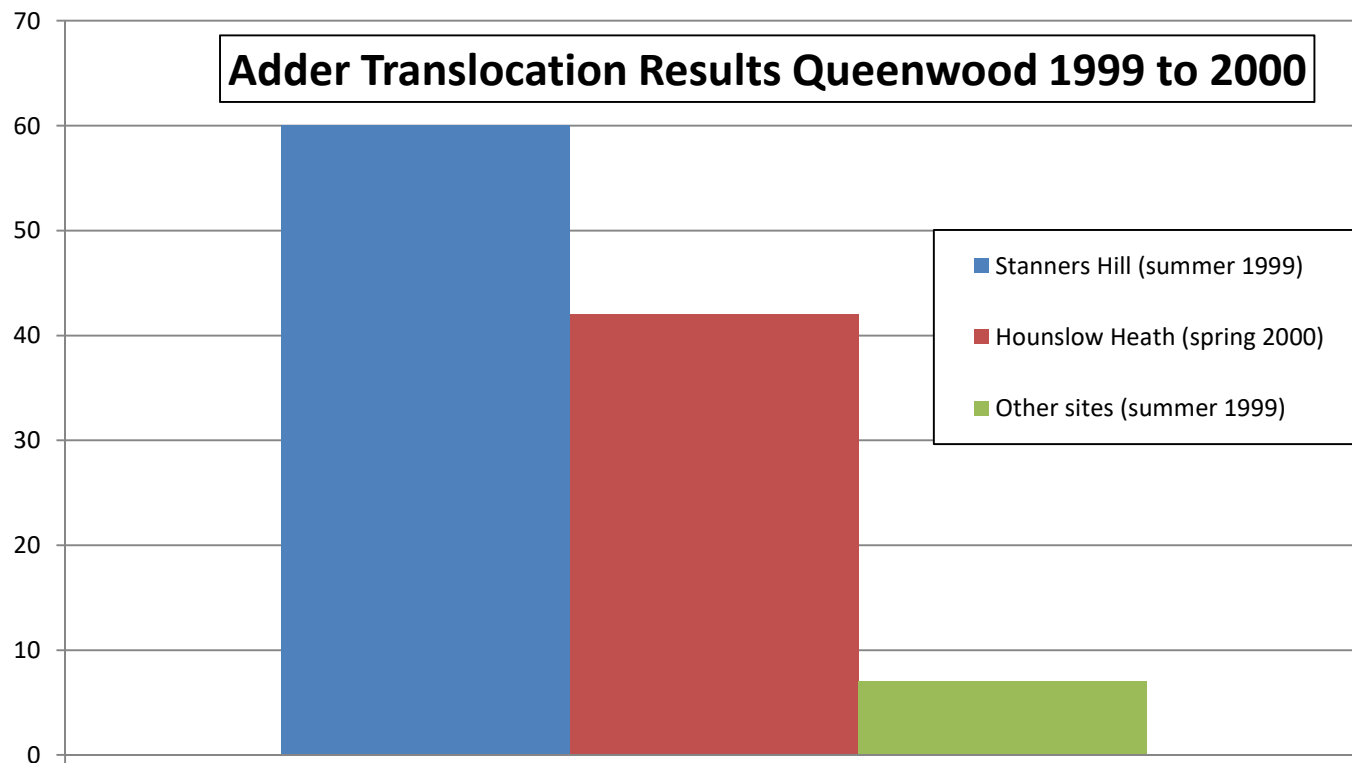
Hounslow Heath (80ha) 14km to north



Review the Landscape Hounslow Heath, London



The Translocation



The release site within Hounslow Heath



Released in log pile / rabbit warren at Paradise Wood, in 2000

- **Adders released in one location on two separate occasions with about 30 and 12 adders on each release, during spring 2000**
- **Range of ages, with some gravid females, though uneven sex ratio**

Measuring Success



Monitoring success needs to be simple

- Habitat assessment
- Presence/absence
- Population



Achieving Success



**'Acts of God', outside of our control:
Heathland Fire, Genetic Bottleneck**



**Site Management:
Needs careful thought**



Summary



Considerations to help achieve success:

- **Seek out receptor sites early in the survey**
- **Review the Landscape (www.magic.gov.uk)**
- **Consider the release carefully**
- **Develop Partnerships (esp. with site managers)**
- **Appropriate Management key to success**

Hardest part of a Mitigation Scheme is choosing a suitable receptor site and managing it appropriately