

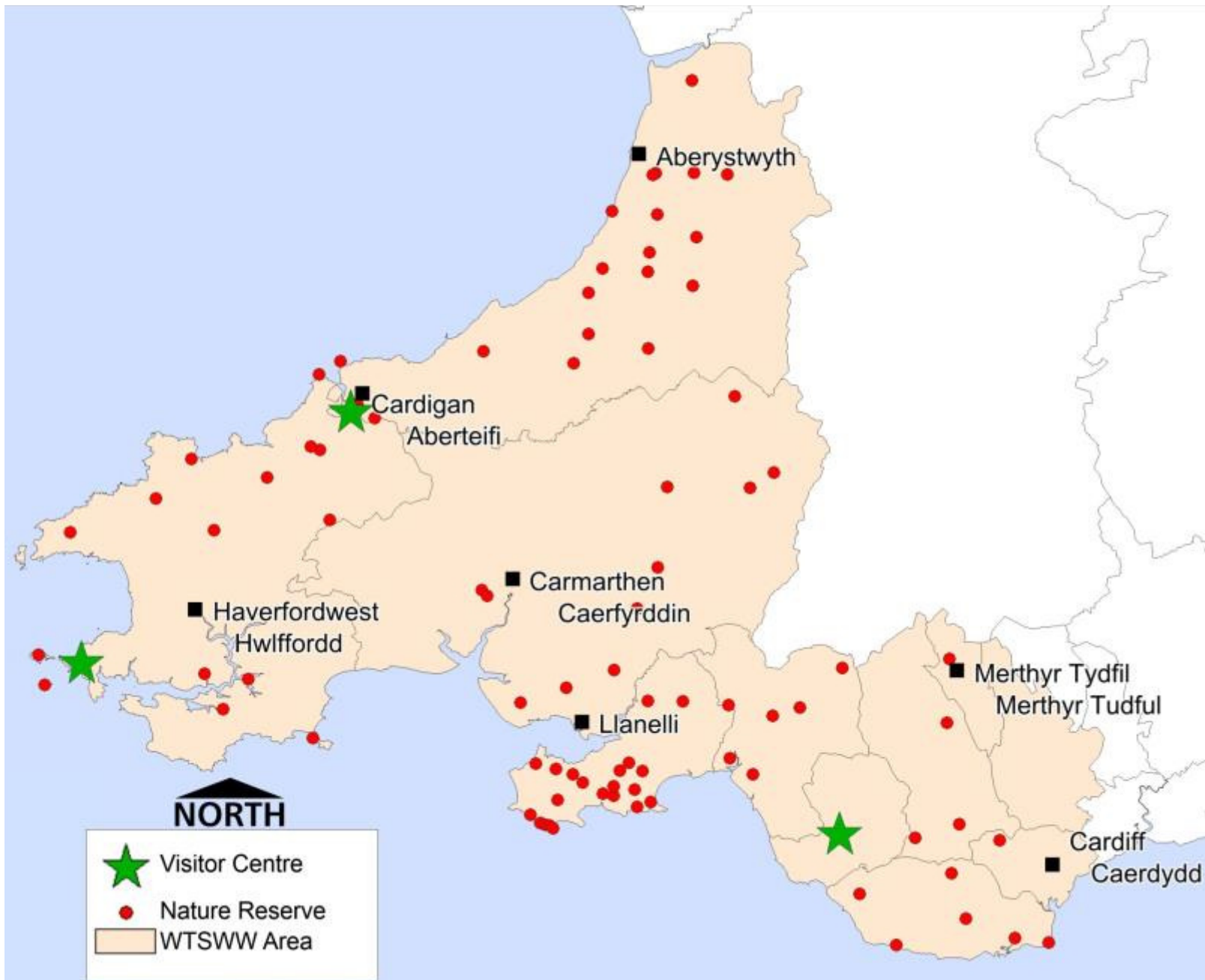
Challenges of Managing Nature Reserves for Adders



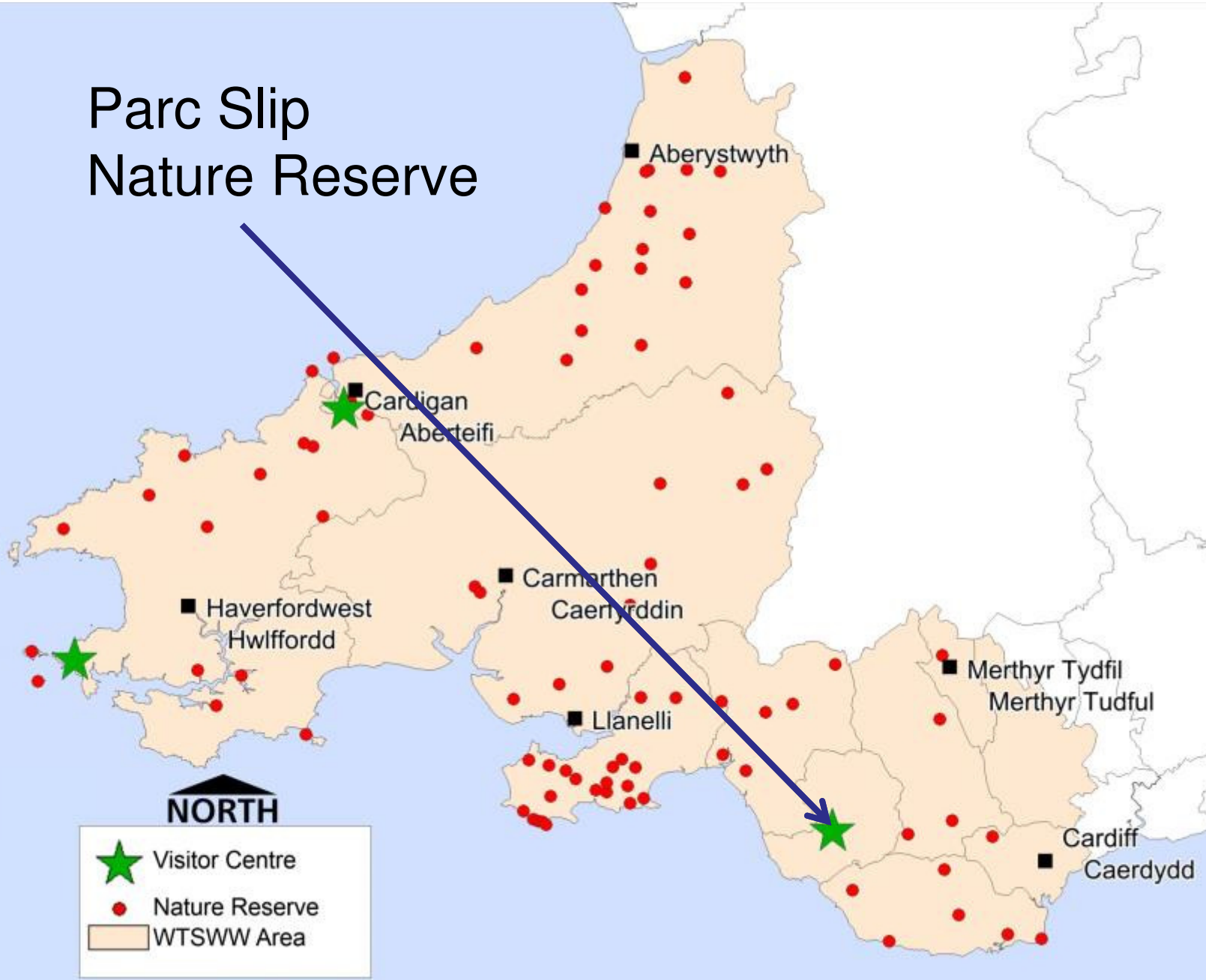
Robert Jones Parry

Protecting Wildlife for the Future

Gwarchod Natur ar gyfer y Dyfodol



Parc Slip Nature Reserve



Parc Slip Nature Reserve



bing © Getmapping plc © 2010 GeoEye © 2010 Intermap © 2013 Microsoft Corporation

Protecting Wildlife for the Future

Gwarchod Natur ar gyfer y Dyfodol





Protecting **Wildlife** for the Future

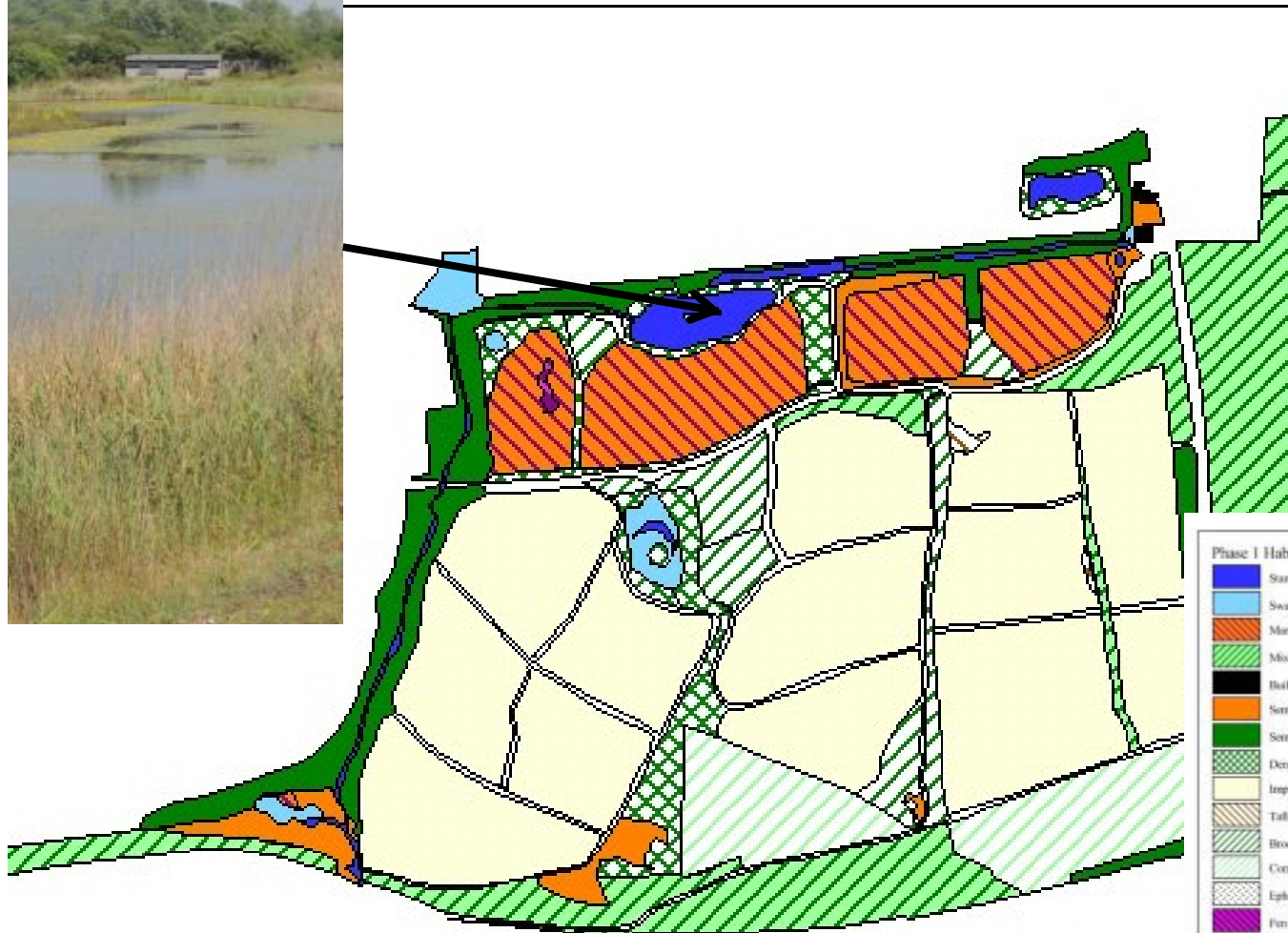


Gwarchod **Natur** ar gyfer y Dyfodol



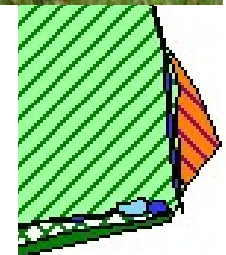
Protecting **Wildlife** for the Future

| Gwarchod **Natur** ar gyfer y Dyfodol



Phase 1 Habitats - Parc Slip, 2011

| | |
|--|--|
| | Standing Water (G1) / Running Water (G2) |
| | Swamp (F1) |
| | Musky Grassland (B5) |
| | Mixed Woodland Plantation (A1.3.2) |
| | Buildings (J5.6) |
| | Semi-Improved Natural Grassland (B2.2) |
| | Semi-Natural Broadleaved Woodland (A1.1.1) |
| | Dense Scrub (A2.1) |
| | Improved Grassland (B4) |
| | Tall Radical Herb (C3.1) |
| | Broadleaved Woodland Plantation (A1.1.2) |
| | Coniferous Woodland Plantation (A1.2.2) |
| | Ephemeral / Short Perennial (J1.3) |
| | Fun (J3) |
| | Scattered Scrub (A2.2) |
| | Scattered Broadleaved Woodland (A3.1) |
| | Narrow Herb-Rich Vegge (B2.2) |
| | Species-Poor Insect Hedge (J2.1.2) |
| | Species-Poor Defiant Hedge (J2.2.2) |
| | Dry Ditch (J2.6) |
| | Ditch with Running Water (G2) |
| | Ditch with Standing Water (G1) |
| | Species-Rich Insect Hedge (J2.1.1) |



250 500
metres



Protecting **Wildlife** for the Future

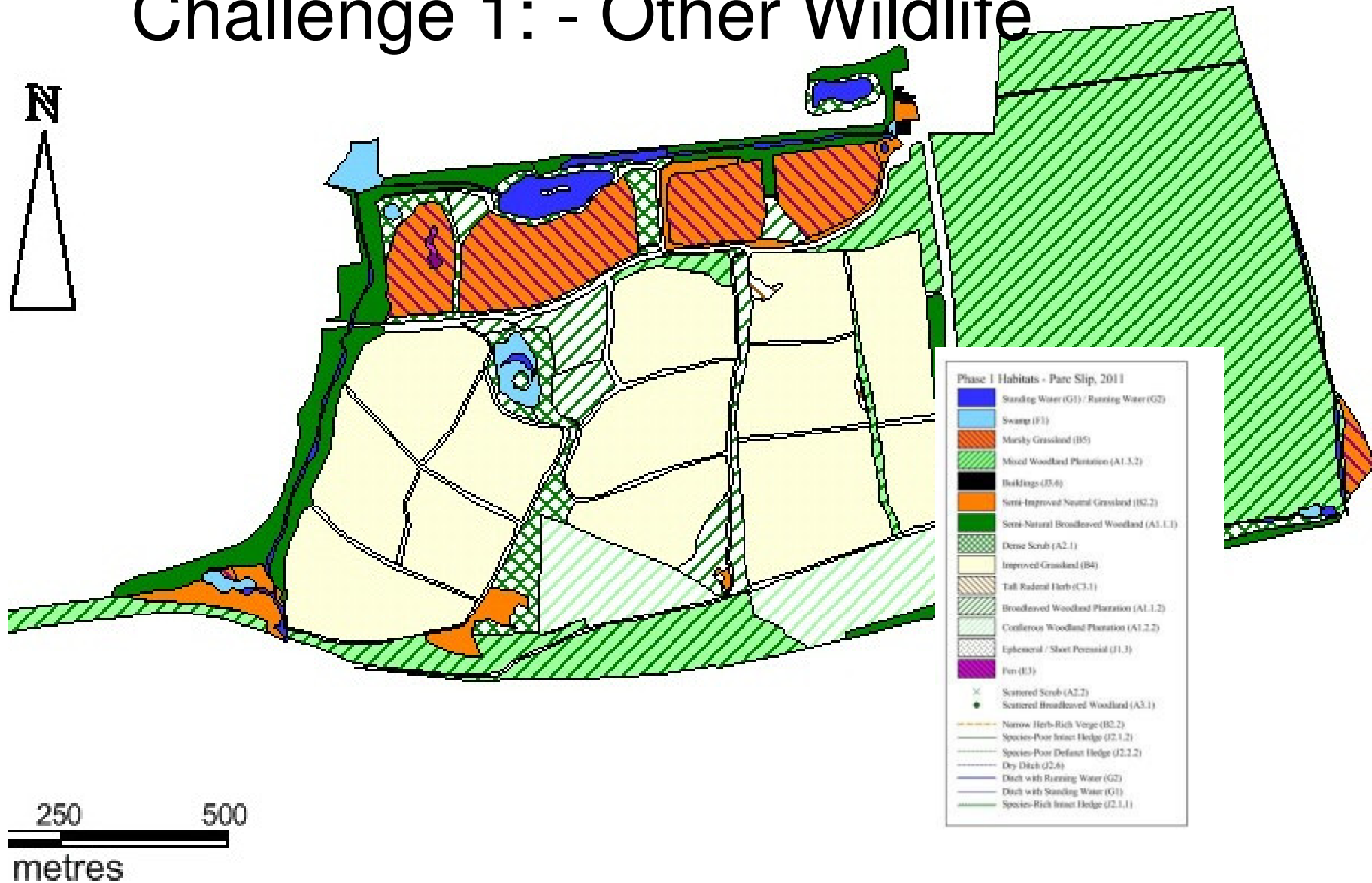
| Gwarchod **Natur** ar gyfer y Dyfodol



Protecting **Wildlife** for the Future

| Gwarchod **Natur** ar gyfer y Dyfodol

Challenge 1: - Other Wildlife



Challenge 2: Species Protection



**Cyfoeth
Naturiol
Cymru
Natural
Resources
Wales**

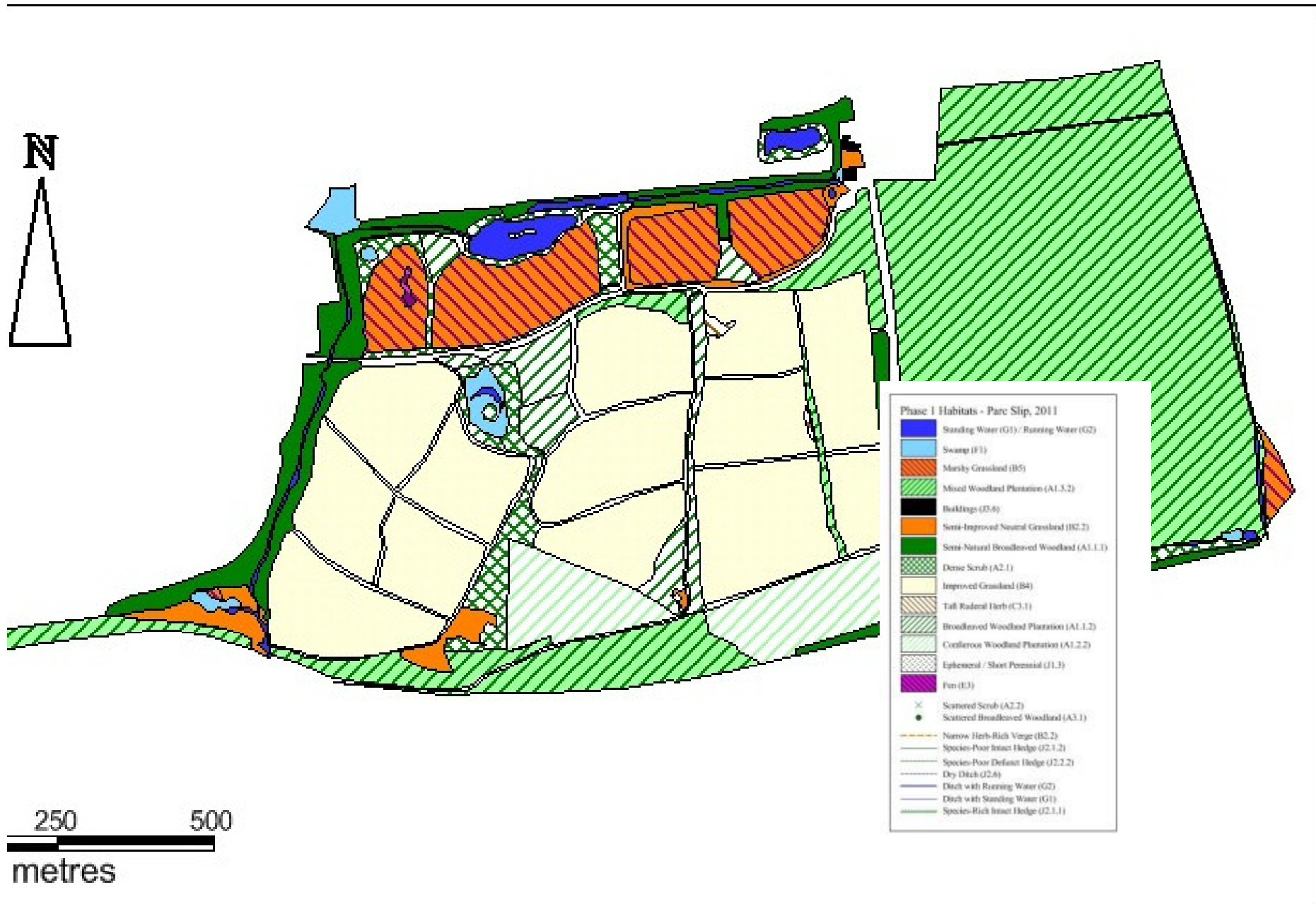


Challenge 3: People



Protecting **Wildlife** for the Future

| Gwarchod **Natur** ar gyfer y Dyfodol





amphibian and reptile
conservation 

Protecting **Wildlife** for the Future

| Gwarchod **Natur** ar gyfer y Dyfodol

Adder ride restoration



- Restore light levels
- Reduce likelihood of encounters with dogs
- Increase structural diversity at ground level with brash arisings





Protecting Wildlife for the Future

Gwarchod Natur ar gyfer y Dyfodol

Creation of new ride (Strawberry ride)

Originally a closed canopy Conifer plantation

- Cut ride with South facing aspect
- Provide shelter from wind
- Provide substantial structural diversity at ground level (increased basking, foraging & hibernation opportunities)
- Comparative low disturbance (no public access)





Creating Habitat for Welsh Wildlife



Protecting Wildlife for the Future

| Gwarchod Natur ar gyfer y Dyfodol



Protecting Wildlife for the Future

Gwarchod Natur ar gyfer y Dyfodol

The future...

Further collaboration with ARC.

Influence others to undertake similar projects.



Thank You



Robert Jones Parry
Conservation Manager

Wildlife Trust of South
and West Wales

01656 724100

07989 478176

r.parry@welshwildlife.org



Photo credits;

Pete Hill (ARC)
Mark Barber (ARC)
Vaughn Matthews (WTSWW)

